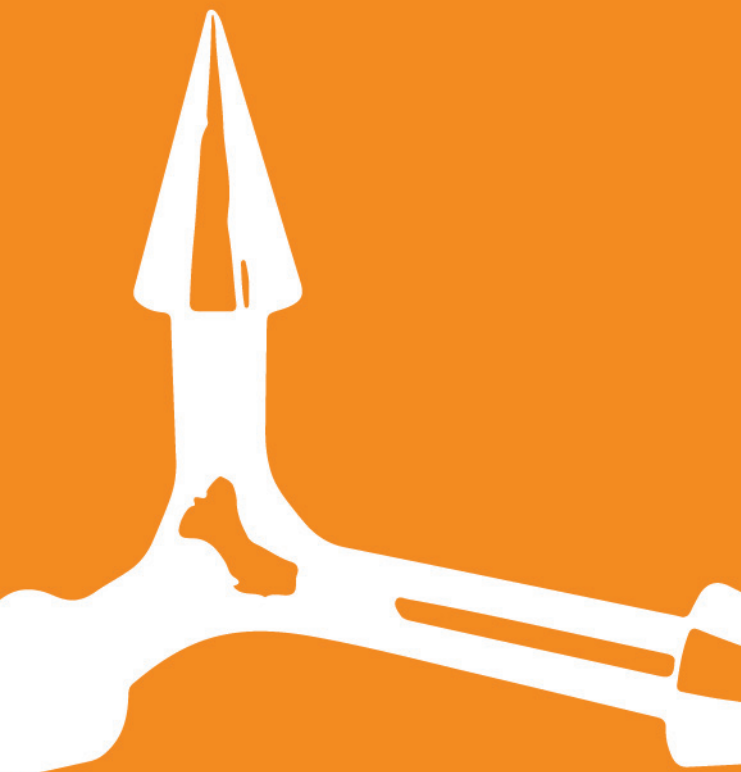


# QUICK GUIDE

A QUICK TECHNICAL OVERVIEW  
FOR VARIOUS ANTENNAS & ACCESSORIES



Poynting

Making wireless happen

# CELLULAR & M2M

## XPOL - 1

**4G**  
LTE



Frequency:	790-960, 1710-2700 MHz
Max Gain:	4dBi - Omni Directional (2x2 MIMO)
Polarisation:	+45° and -45°
Size (LxWxD):	215mm x 135mm x 85mm

## XPOL - 2

**4G**  
LTE



Frequency:	698-2700 MHz
Max Gain:	9dBi - Directional (2x2 MIMO)
Polarisation:	Vertical & Horizontal
Size (LxWxD):	255mm x 250mm x 80mm



## XPOL - 13

**3.5**<sup>GHz</sup>  
**CBRS**

**4G**  
**LTE**



Frequency:	3400-3800 MHz
Max Gain:	10.5dBi - Directional (2x2 MIMO)
Polarisation:	+90° and -90°
Size (LxWxD):	215mm x 135mm x 85mm

## XPOL - 16

**450**  
**MHz**

**4G**  
**LTE**



Frequency:	450-470, 790-860, 1710-2170 MHz
Max Gain:	8dBi - Directional (2x2 MIMO)
Polarisation:	+45° and -45°
Size (LxWxD):	350mm x 350mm x 90mm

# CELLULAR & M2M

## XPOL - 6 - 10m

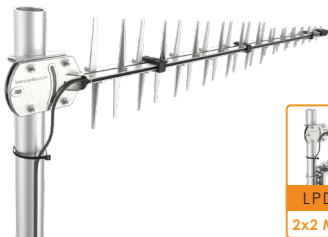
**4G**  
LTE



Frequency:	1710-2700 MHz
Max Gain:	11dBi - Directional (2x2 MIMO)
Polarisation:	+45° and -45°
Size (LxWxD):	300mm x 145mm x 57mm

## LPDA - 92

**4G**  
LTE



LPDA-92 LTE  
2x2 MIMO Option

Frequency:	698-3000 MHz
Max Gain:	12dBi - Directional (SISO)
Polarisation:	Linear Vertical
Size (LxWxD):	1100mm x 180mm x 60mm

variants

LTE MIMO	
Description:	2 x LPDA-92 with BRKT-30 or BRKT-33
BRKT-30*	Horizontal Mount for Single LPDA-92
BRKT-33*	Cross-polarised +45° / -45° (V-form bracket)

\*See bracket options under Accessories



## OMNI - 280



**3.5**<sup>GHz</sup>  
**CBRs**

**4G**  
LTE



**LoRa**



Frequency:	698-960, 1710-2700, 3400-3800 MHz
Max Gain:	3.8dBi - Omni Directional
Polarisation:	Linear Vertical
Size (LxWxD):	150mm x 60mm x 40mm

## OMNI - 85



**4G**  
LTE



**LoRa**



Frequency:	790 - 2700 MHz
Max Gain:	2.5dBi - Omni Directional
Polarisation:	Linear Vertical
Size (LxWxD):	210mm x 20mm x 14mm

# CELLULAR & M2M

## OMNI - 121



Frequency:	690-960, 1710-2170, 2500-2600 MHz
Max Gain:	6dBi - Omni Directional
Polarisation:	Linear Vertical
Size (LxWxD):	555mm x 50mm x 50mm

## OMNI - 232



Frequency:	795-960, 1710-2170, 2300-2400, 2500-2700 MHz
Max Gain:	5dBi - Omni Directional
Polarisation:	Linear Vertical
Size (LxWxD):	102mm x 32mm

Available in US &  
APAC markets only

## OMNI - 292 - V2

**4G**  
LTE



**(M2M)**

**LoRa**

**SIGFOX**

Frequency:	698-960, 1710-2700 MHz
Max Gain:	7.5dBi - Omni Directional
Polarisation:	Linear Vertical
Size (LxWxD):	665mm x 75mm x 75mm

## OMNI - 291

**Wi-Fi**

**450**  
MHz

**4G**  
LTE



Frequency:	450-470, 690-960, 1710-2700 MHz
Max Gain:	7.5dBi - Omni Directional
Polarisation:	Linear Vertical
Size (LxWxD):	560mm x 75mm

# CELLULAR & M2M

Available in US &  
APAC markets only

## OMNI - 400



Frequency:	690-960, 1710-2700 MHz
Max Gain:	7.5dBi - Omni Directional
Polarisation:	Linear Vertical
Size (LxWxD):	765mm x 75mm

## OMNI - 275



Frequency:	452-468, 790-960, 1710-2700 MHz
Max Gain:	7dBi - Omni Directional
Polarisation:	Linear Vertical
Size (LxWxD):	485mm x 75mm x 75mm





## DASH - 1



Frequency:	690-2700 MHz
Max Gain:	4dBi - Omni Directional
Polarisation:	Linear Horizontal/Vertical
Size (LxWxD):	258mm x 34mm x 13mm

# MOBILITY

## MIMO - 1



5-in-1 Antenna	2x LTE; 2x Wi-Fi (Dual Band); 1x GPS
Frequency:	698-960, 1710-2700, 5000-6000 MHz
Max Gain:	6.2dBi - Omni Directional (2x2 MIMO)
Polarisation:	Linear Vertical
Size (LxWxD):	252mm x 127mm x 55mm

variants

MIMO-1-1	MIMO-1-2
2-in-1 Antenna 2 x LTE	3-in-1 Antenna 2 x LTE; 1 x GPS
698-960, 1710-2700 MHz	
4.5dBi - Omni Directional (2x2 MIMO)	

## MIMO - 3



Frequency:	450-470, 698-960, 1710-2700, 3400-3800, 5000-6000 MHz
Max Gain:	6.0dBi - Omni Directional (2x2 MIMO)
Polarisation:	Linear Vertical
Size (LxWxD):	252mm x 134mm x 120mm

variants

MIMO-3-15	MIMO-3-13	MIMO-3-12
5-in-1 Antenna 2 x LTE; 2 x Wi-Fi; 1 x GPS	3-in-1 Antenna 2 x LTE; 1 x GPS	2-in-1 Antenna 2 x LTE
450-470, 698-960, 1710-2700, 3400-3800 MHz		
6.0dBi - Omni Directional (2x2 MIMO)		

# INDUSTRIAL WIFI

Intrinsically safe  
option available

## HELI - 3



Helical Antenna	Mining & Tunnels
Frequency:	2400 -2500 MHz
Max Gain:	17.5dBi - Directional
Polarisation:	Right hand circular
Size (LxWxD):	1050mm x 150mm x 120mm

Intrinsically safe  
option available

## HELI - 4



Helical Antenna	Mining & Tunnels
Frequency:	2400 - 2500 MHz
Max Gain:	15dBi - Directional
Polarisation:	Right hand Circular
Size (LxWxD):	405mm x110mm x 130mm

# INDUSTRIAL WIFI

## HELI - 8

Intrinsically safe  
option available



Helical Antenna	Mining & Tunnels
Frequency:	2400 - 2500 MHz
Max Gain:	14dBi - Bi Directional
Polarisation:	Right hand Circular
Size (LxWxD):	2050mm x 140mm x 140mm

## OMNI - 296

Intrinsically safe  
option available

**3.5** GHz  
**CBRS**



Frequency:	2400-2500, 3300-3800, 5000-6000 MHz
Max Gain:	7.5dBi - Omni Directional (SISO)
Polarisation:	Linear Vertical
Size (LxWxD):	485mm x 75mm x 75mm



## WLAN - 60

**3.5**<sup>GHz</sup>  
**CBRS**

**Wi Fi**  
DUALBAND



Frequency:	2400-2500, 3300-3800 & 5000-6000 MHz
Max Gain:	18dBi - Directional (SISO)
Polarisation:	Linear Vertical
Size (LxWxD):	240mm x 240mm x 60mm

4 x 4 MIMO

## WLAN - 61

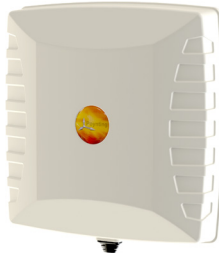
**Wi Fi**  
DUALBAND



Frequency:	2400-2500 & 5000-6000 MHz
Max Gain:	11dBi - Directional (4X4 MiMo)
Polarisation:	Vertical & Horizontally, +45° & -45°
Size (LxWxD):	240mm x 240mm x 60mm

RFID

## PATCH - 25



Frequency:	860 - 960 MHz
Max Gain:	8.75dBi - Directional
Polarisation:	Right Hand Circular
Size (LxWxD):	250mm x 250mm x 40mm

## PATCH - 26



Frequency:	820 - 970 MHz
Max Gain:	8dBi - Directional
Polarisation:	Linear
Size (LxWxD):	250mm x 250mm x 40mm

# ACCESSORIES

Coming Soon

## BRKT - 40 / BRKT - 41



**BRKT-40**

Omni Antenna to Universal Bracket Adapter with Brass Inserts. Thread size: 1"-14 TPI

**BRKT-41**

Omni Antenna to Universal Bracket Adapter with Brass Inserts. Thread size: 1.25"-11 TPI

Suitable to use as accessories and/or replacement parts for the following antennas: OMNI-69, OMNI-292, OMNI-296, OMNI-275, OMNI-400 & OMNI-291

## BRKT - 39

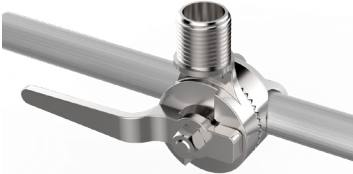


**Heavy Duty Stainless Steel Marine Mount Antenna Bracket  
1"-141**

for OMNI 291, OMNI-400

# ACCESSORIES

## BRKT - 38



Heavy Duty Stainless Steel Marine Ratchet  
Rail Mount Antenna Bracket  
for OMNI 291, OMNI-400

## BRKT - 37



Heavy Duty Stainless Steel Marine Flat Mount Antenna  
Bracket 1" - 141  
for OMNI 291, OMNI-400

## BRKT - 33



±45° Polarisation Bracket  
for 2 x LPDA 92

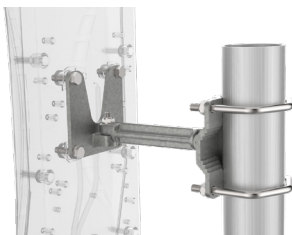


## BRKT - 30



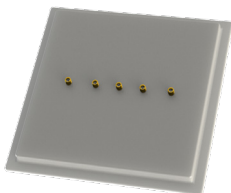
**LPDA 92 LTE Horizontal Mounting Bracket**  
for 2 x LPDA 92

## BRKT - 16



**Universal Cast Swivel Bracket**  
for XPOL 6-10m, PATCH 25 & PATCH 26

## SPLT - 14

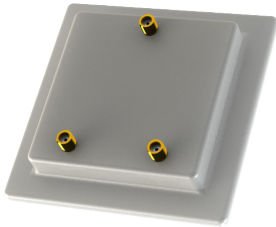


**Cellular 4-Way Splitter**

Frequency:	690-960, 1710-1880 MHz
Size (LxWxD):	150mm x 165mm x 20mm

# ACCESSORIES

## SPLT - 13



Cellular 2-Way Splitter	
Frequency:	628-2700 MHz
Size (LxWxD):	90mm x 90mm x 15mm

The products and specification shown in this quick guide are subject to change without notice. Please consult our web page [www.poynting.tech](http://www.poynting.tech) or your sales contact for updates on our products.



## Authorized Distributor:



**MarCom** S.r.l.

Automazioni basate sulle nuove tecnologie

via Mezzacampagna, 52 / 29  
37135 - Verona (VR)  
Italia

web: <http://www.marcomweb.it>  
shop: <https://shop.marcomweb.it>  
tel. (+39) 045 8204747

### Poynting RSA

#### Poynting Antennas

Unit 4, N1 Industrial Park  
Landmarks Avenue  
Samrand, 0157  
South Africa

☎ +27 12 657 0050

✉ [info@poynting.tech](mailto:info@poynting.tech)

### Poynting EU

#### Poynting Europe GmbH

Kronstadter Straße 4,  
81677 München  
Germany

☎ +49 89 2080 265 38

☎ +49 391 590 81 850

☎ +49 176 529 733 50

✉ [sales-europe@poynting.tech](mailto:sales-europe@poynting.tech)

[www.poynting.tech](http://www.poynting.tech)

